

How to configure Citrix Workspace on Mac OSX

KB0011389

☆☆☆☆☆ 66 views

If you wish to use Citrix Workspace on Mac OSX you will need to download and install the application.

Please follow the steps below to install and set up the Citrix Workspace app.

1. Download the client

Visit <https://www.citrix.com/en-gb/downloads/workspace-app/mac/workspace-app-for-mac-latest.html> (<https://www.citrix.com/en-gb/downloads/workspace-app/mac/workspace-app-for-mac-latest.html>), and then click the **Download Citrix Workspace app for Mac** button:

[Download Citrix Workspace app for Mac](#)

2. Open the DMG File

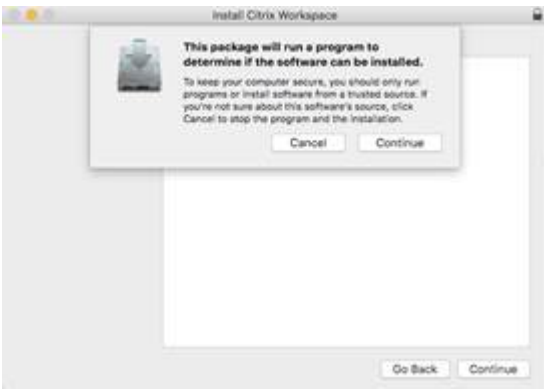
The *CitrixWorkspaceApp.dmg* file will then download to the **Download** folder. Double click on this DMG file to open it.

3. Start Citrix Workspace setup

Double clicking on the DMG file will open the following window. Double click on the **Install Citrix Workspace** icon to start the install.



Click **Continue** to run the *This package will run a program to determine if the software can be installed* window.



Click **Continue** on the **Introduction** section.



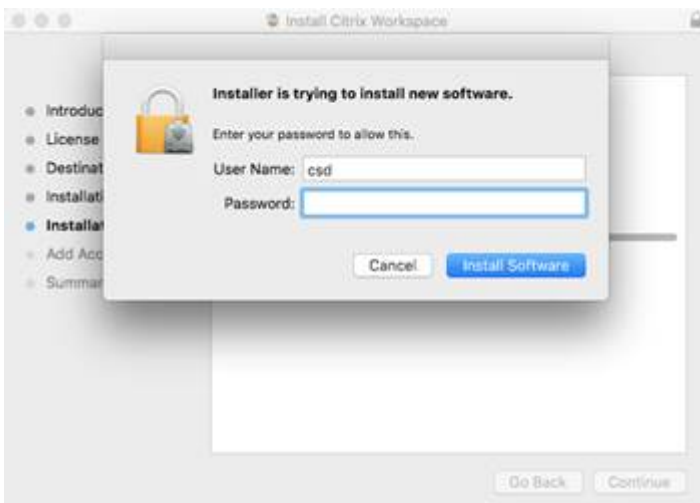
Click **Continue** and then click **Agree** on the **License** section.



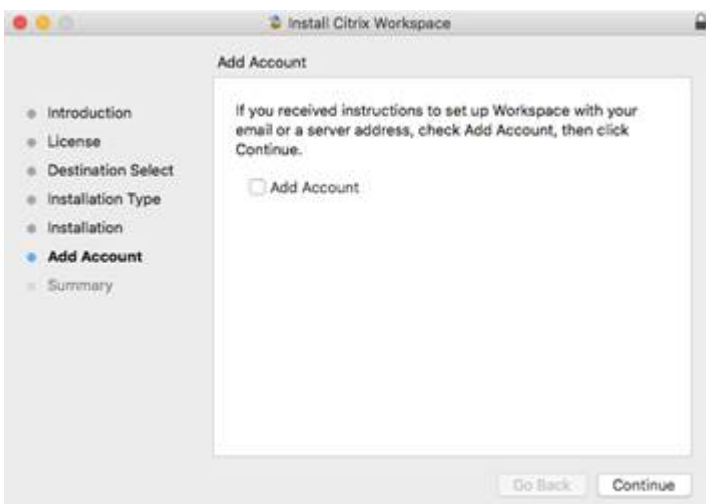
Click **Install** to accept the default installation drive. Or you can click **Change Install Location** to select a different installation disk.



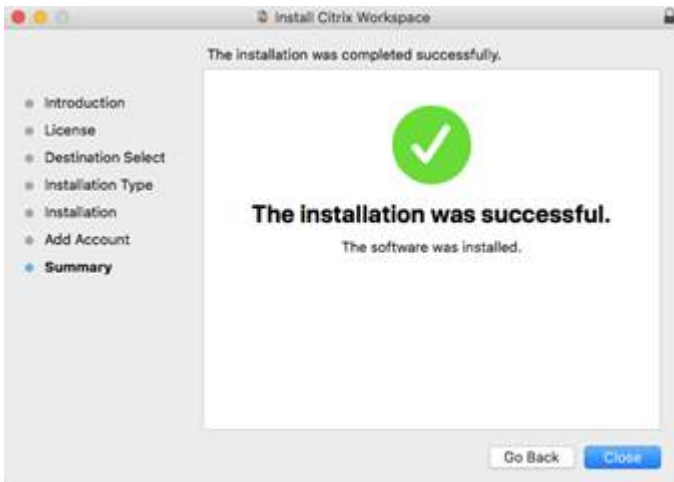
You will then need to type in your **local Mac credentials** and then click **Install Software** to allow the installation to proceed.



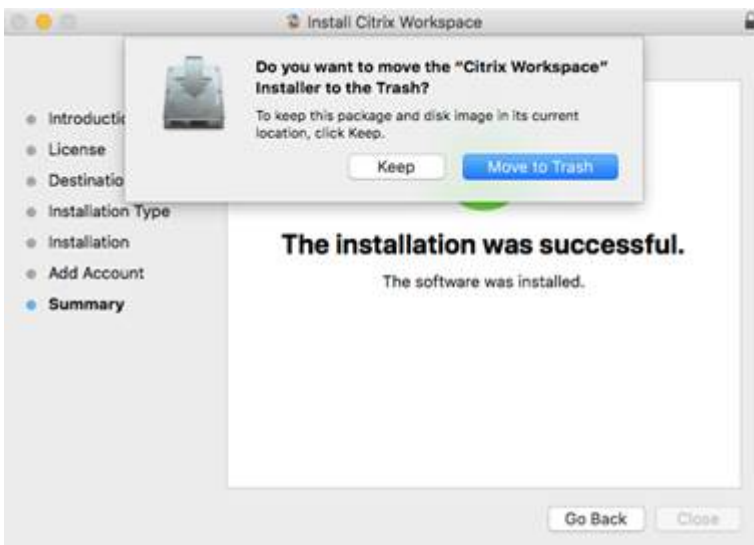
Click **Continue** and leave the Add Account box **unticked**.



Click **Close** on **The installation was successful** window.



You can then move the Citrix Workspace **Installer** to the Trash by clicking the **Move to Trash** button.



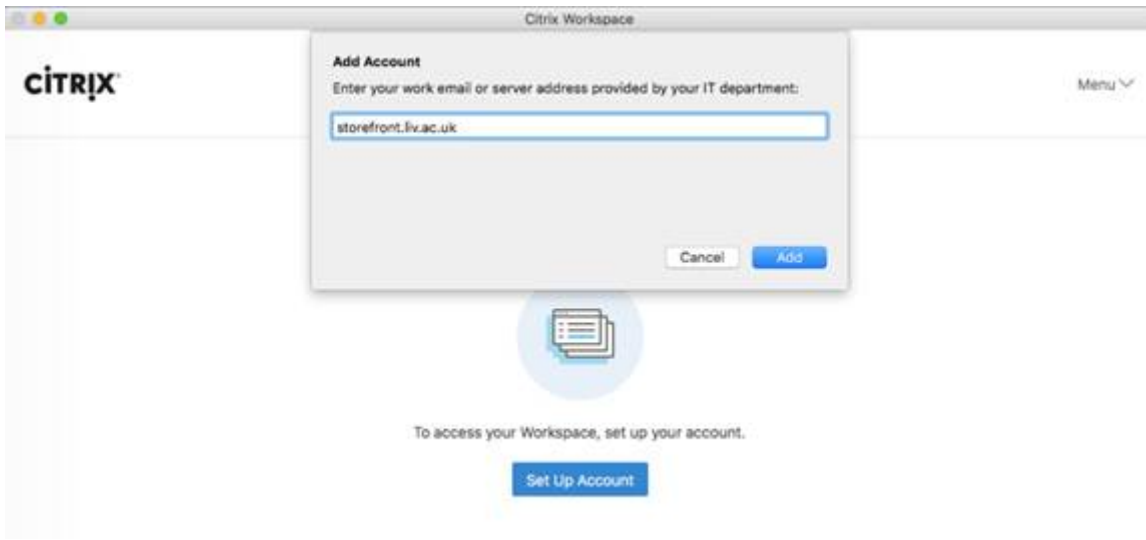
4. Set up Citrix Workspace

You should now have the Citrix Workspace icon in the Status menus section of the Menu Bar along the top of your Mac. **Right click** on this and choose **Open Citrix Workspace**.



5. Enter the server address

Enter the server address which is **storefront.liv.ac.uk** and then click **Add** to proceed.



6. Enter your details

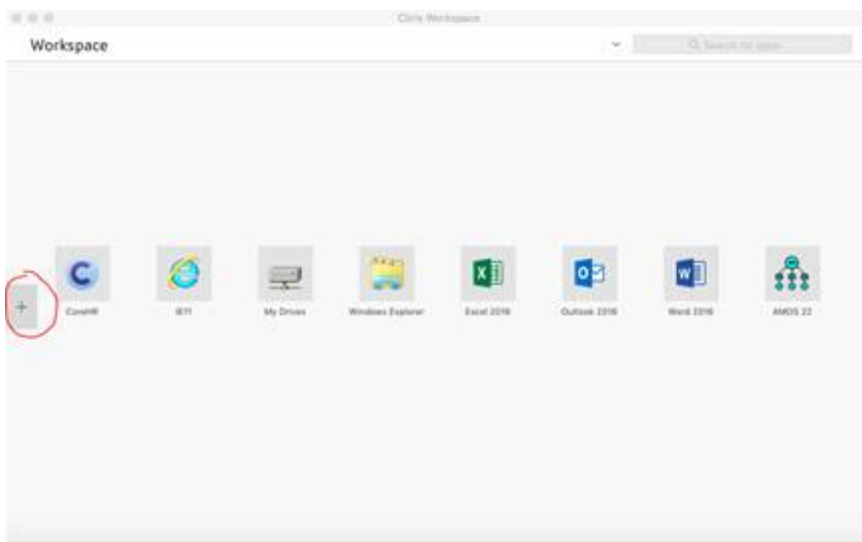
Enter your MWS username prefixed by livad\ - for example: *livad\username*.

Enter your MWS password, tick the **Remember my password** tick-box and then click **Log On** to proceed.



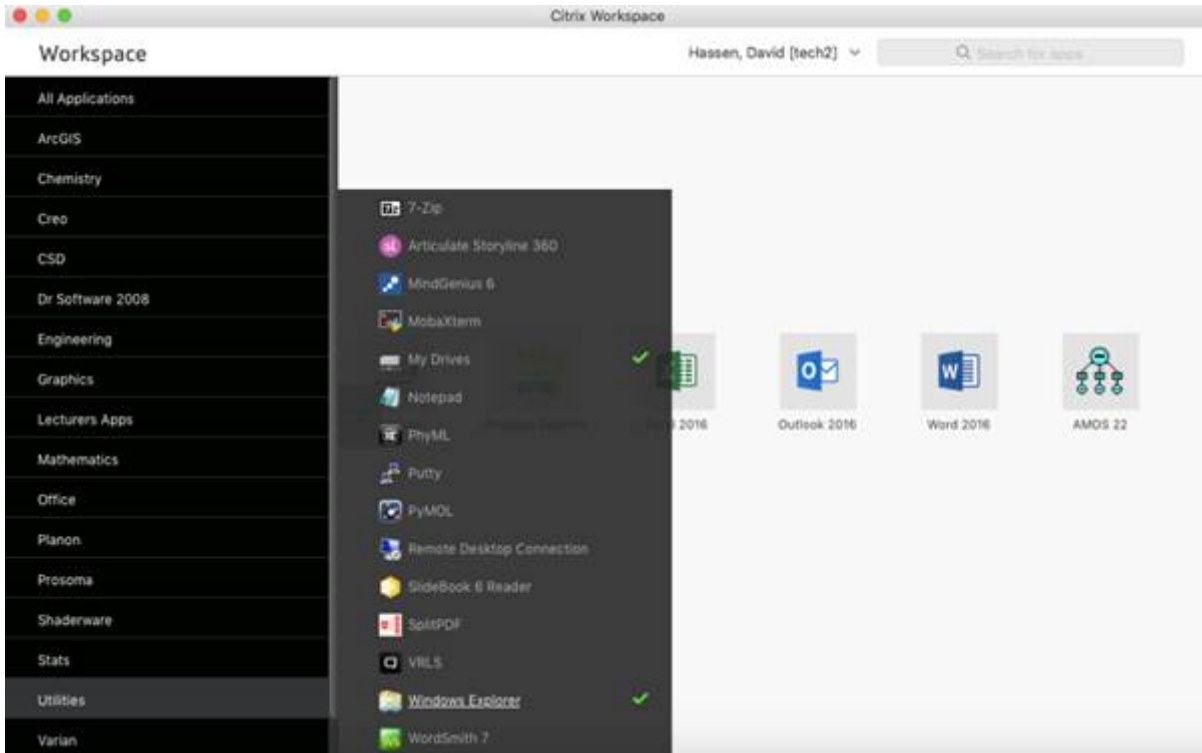
7. Open Apps Anywhere

Once you have logged in, click on the + icon to open the list of applications in Apps Anywhere.



8. Select the application or utility you wish to use

Applications which are available for you to use are organised in categories. Browse through these categories to find the application you wish to use. For example, if you wish to look at files on your M Drive browse to Utilities > Windows Explorer.



Authored by Andrew Michalak
Last modified 5 weeks ago

Helpful?

80% found this useful